

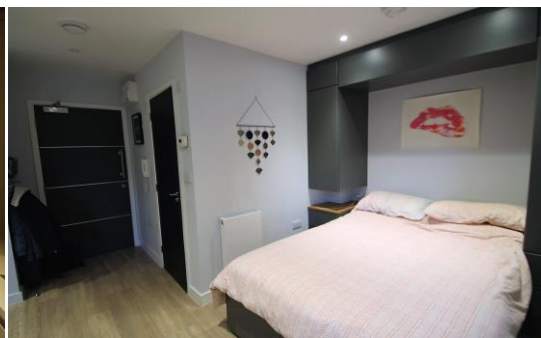


Flat 19 Lincoln House

Brookfield Road
Wooburn Green
HP10 0QA

Monthly Rental Of £900

- EXCEPTIONALLY WELL PRESENTED FIRST FLOOR STUDIO
- Available Late February Fully Furnished
- Entry Phone System and Lift To All Floors
- Two Private Large Storage Cupboards
- Residents Parking
- EPC B, Council Tax: B



T: 01494 358358

E: lettings@wyeres.co.uk

W: www.wyeres.co.uk

Flat 19 Lincoln House Brookfield Road Wooburn Green HP10 0QA

PROPERTY FACTS

| Extremely Well Presented First Floor Studio Apartment | Entry Phone System | Lift | Two Large Private Storage Cupboards | Gas Central Heating | Living/Dining/kitchen/bedroom space | Contemporary Kitchen with Integrated Appliances | Modern Shower Room | Residents Parking | Communal Gardens | Council Tax band B | Early Viewing Strongly Advised |

A rare opportunity to rent this superbly designed first floor studio apartment. The property briefly comprises; entry phone system and lift to all floors, fully furnished and a fully equipped contemporary kitchen with integrated appliances; oven/microwave, induction hob, separate fridge and freezer, slimline dishwasher, washer/dryer and plenty of cupboard space. Living room space and bedroom area smartly sectioned off and a stylish shower room. The studio further benefits from two large storage cupboards allocated to the property located just outside of the property off the communal landing. Early viewing strongly advised to appreciate this truly well designed studio and what it has to offer.

LOCATION FACTS

Located in the popular village of Wooburn Green within easy access to local amenities and the M40. Bourne End village is also within walking distance and is about five miles south east of High Wycombe and three miles east of Marlow.

DIRECTIONS

Head South-east on High Street towards Crendon Street/A404, continue onto Easton Street, follow London Road/A40 to Boundary Road in Loudwater, merge onto London Road/A40, at the roundabout take the 3rd exit and stay on London Road/A40, at the roundabout take the 2nd exit onto Station Road, at the roundabout continue straight onto Boundary Road/A4094, continue on A4094, turn left onto Brookfield Road and Lincoln House can be found on the right hand side

